

가

( )

[ ]

[ ]

( : 2008 04 01 -2008 06 30 )

○ [ 가 [ 가 가 ] , .]

○ 가 가 (3 ) 가 , .



I.

- 1.
- 2.
- 3.

II.

- 1.
- 2.
3. ,
- 4.
- 5.
6. ,
- 7.
- 8.
- 9.
- 10.

< - >

# I.

## 1.

: 가 ( )  
 : 81476  
 :  
 : [ ]( ), 가 , ,

[ ] ( : , %)

(A)	-	2,062	0.00%
(B)	-		0.00%
(C=A-B)	-		0.00%
(D)	-	2,041	0.00%
가 (E=C/D X 1000)	0.00	1,010.29	0.00%

) 가 가 ( ), ( ) ( 가 )  
가 가

## 2.

[ ] ( : %)

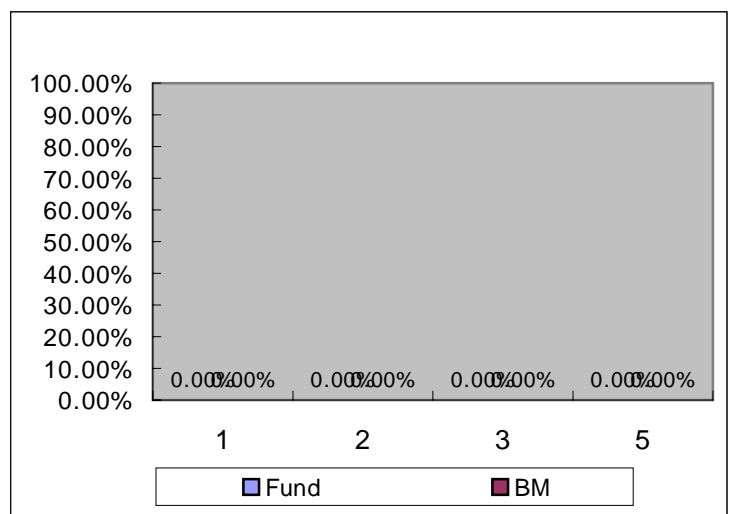
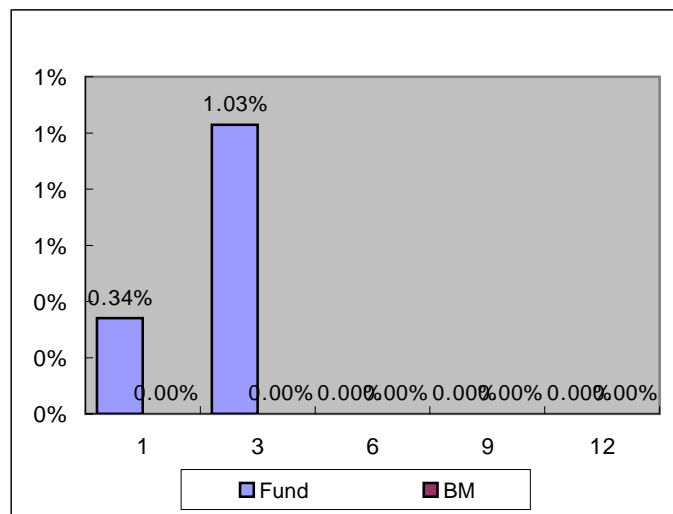
	1	3	6	9	1
가 ( )	0.34%	1.03%	0.00%	0.00%	0.00%

:

[ ] ( : %)

	1	2	3	5
가 ( )	0.00%	0.00%	0.00%	0.00%

:





1.

: 81476  
: 2008-04-01  
:  
:  
:  
:  
:  
:

가 가 가  
가 . 가

2.

( : , %)

( : , %)

( : , %)

( : , )

( : , )

( ) ( : )

- / ( : , %)

( : , %)

( : , %)

( : , %)

	( )	( )		( )	
			0	4.50%	100.00%
			0		100.00%

( : )

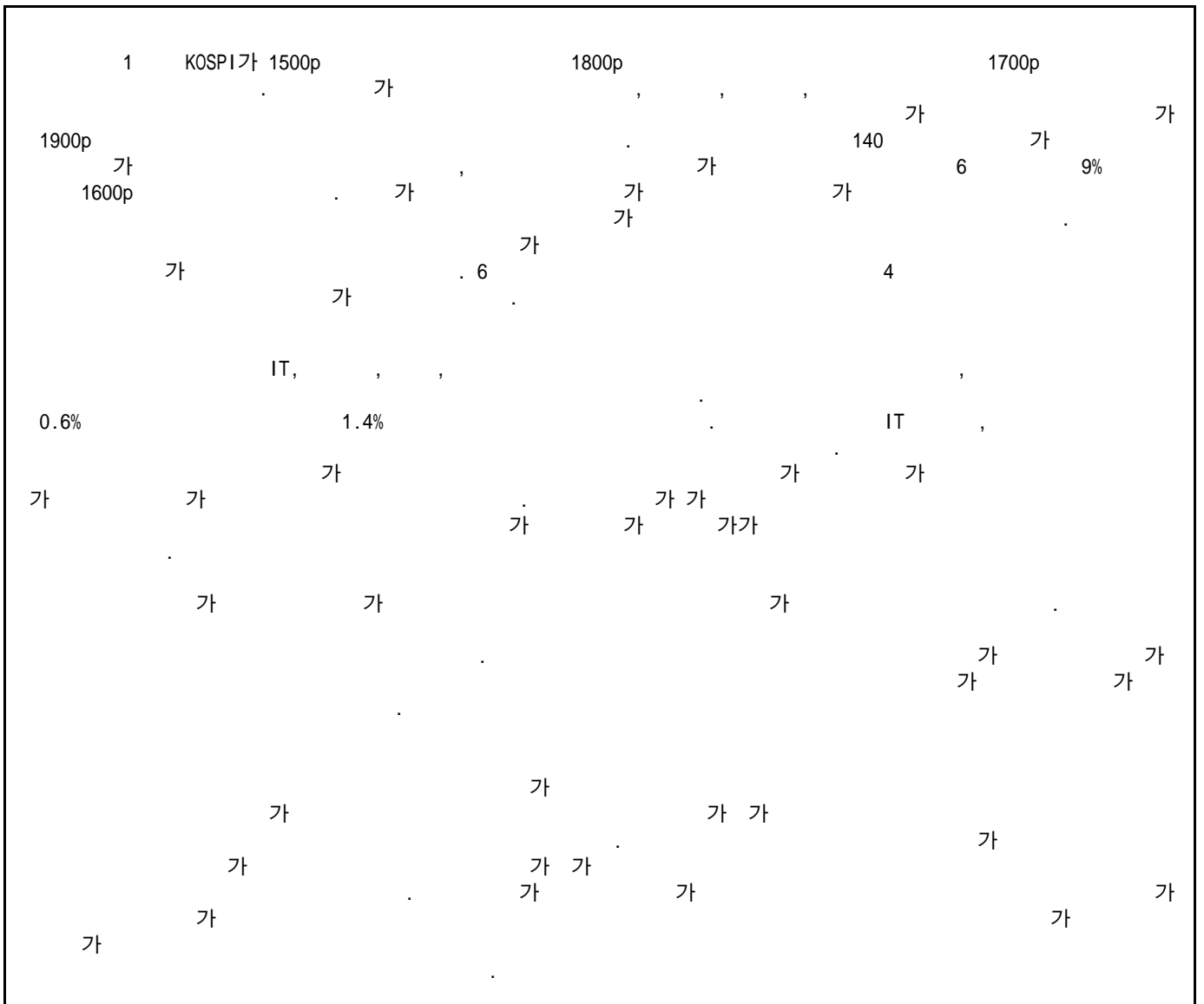
가

( : )

3. ,

( : , , % )

4.



( : , % )

	0	0	0	0	0	0	0	0	0	0	0	0
	0	0	0	0	0	0	0	0	0	0	0	0

( : , % )

		(%)		(%)	
	0.00	0.00%	0.00	0.00%	
	0.00	0.00%	0.00	0.00%	
	0.00	0.00%	0.00	0.00%	
	0.00	0.00%	0.00	0.00%	

\*

( : % )

	0.00%	0.00%
	0.00%	0.00%

5.

( : , )

	46		9	14,295	(7 4 ) (11 11 )	99010120004
	33		27	8,206	現) KB (5 9 ) (2 2 )	6010120030

)

6. ,

( : , % )

( : , % )

( : , % )

7.

8.

9.

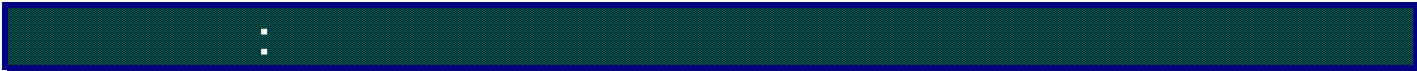
10.

[ 가 ( ) ]  
[ ] ( )

(www.amak.or.kr)

: 34-12 (6,7 ) ( )  
: 02-2004-9500  
: www.syfund.co.kr





	가 가 . ,
( )	( ) 60%
가 ( )	가 가 .
( )	(Class) Class 가 , Class 가
	가 가 가 ( )
	가 . , , ,
	가 가 , 가 , 가
	가 .
	가 .
	가 . , , 가 .
	가

가

( )

[ ]

[ ]

( : 2008 04 01 -2008 06 30 )

○ [ 가 [ 가 가 ] , .]

○ 가 가 (12 ) 가 ,  
.



I.

- 1.
- 2.
- 3.

II.

- 1.
- 2.
3. ,
- 4.
- 5.
6. ,
- 7.
- 8.
- 9.
- 10.

< - >

# I.

## 1.

가 ( )  
 : 53636  
 :  
 : [ ]( ), 가 , ,

[ ] ( : , %)

(A)	4,764,160,560	6,543,799,947	37.35%
(B)	64,382,154	258,888,181	302.11%
(C=A-B)	4,699,778,406	6,284,911,766	33.73%
(D)	5,099,761,481	6,861,825,365	34.55%
가 (E=C/D X 1000)	921.57	915.92	-0.61%

) 가 가 ( ), ( ) ( 가 )  
 가 가

## 2.

[ ] ( : %)

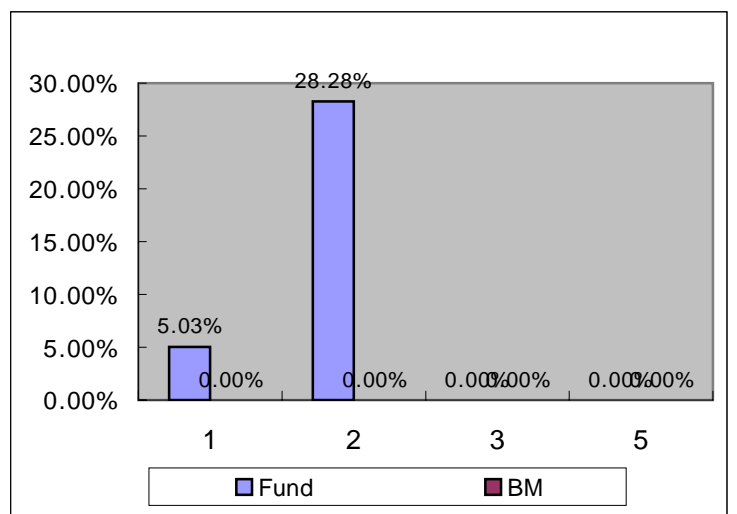
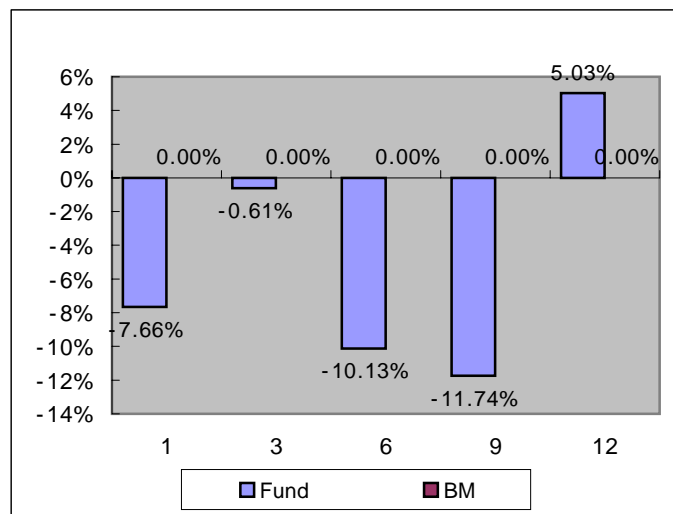
가 ( )	1	3	6	9	1
	-7.66%	-0.61%	-10.13%	-11.74%	5.03%

:

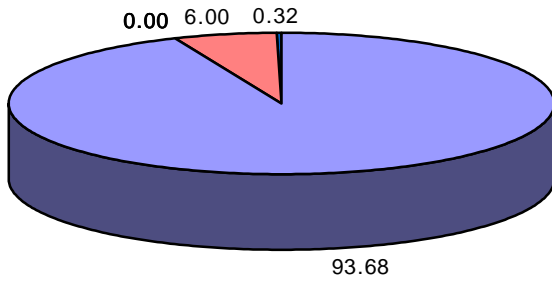
[ ] ( : %)

가 ( )	1	2	3	5
	5.03%	28.28%	0.00%	0.00%

:



3.



( : , % )

KRW	6,130	0	0	0	0	0		0	0	393	21	6,544
	(93.68)	(0.00)	(0.00)	(0.00)	(0.00)	(0.00)	(0.00)	(0.00)	(0.00)	(6.00)	(0.32)	(100.00)
	6,130	0	0	0	0	0		0	0	393	21	6,544
	(93.68)	(0.00)	(0.00)	(0.00)	(0.00)	(0.00)	(0.00)	(0.00)	(0.00)	(6.00)	(0.32)	(100.00)

) ( )

10

		6.36%
	POSCO	3.66%
		3.43%
		3.07%
		2.89%

		1.63%
	NHN	1.58%
		1.53%
		1.52%
		1.44%

# II.

## 1.

: 53636  
 : 2006-01-03  
 :  
 :  
 :  
 :  
 :

## 2.

( : , %)

		가	
	666	416	6.36%
POSCO	440	239	3.66%
	692	224	3.43%
	4,250	201	3.07%
	6,140	189	2.89%
	1,505	107	1.63%
NHN	566	103	1.58%
	79	100	1.53%
	695	99	1.52%
	461	95	1.44%
	4,090	94	1.43%
	441	89	1.36%
	2,197	89	1.36%
	1,118	89	1.36%
I&C	1,394	87	1.33%
GS	2,150	86	1.31%
	1,149	86	1.31%
	6,121	86	1.31%
	10,000	85	1.30%
KT&G	942	85	1.30%
LG	2,020	82	1.26%
E1	725	81	1.24%
	1,996	80	1.23%
KC	6,570	77	1.17%
	2,982	75	1.14%
	3,211	73	1.12%
KT	1,617	72	1.11%
LG	2,264	71	1.08%
	456	70	1.07%
	10,964	70	1.07%

SK	348	66	1.01%
	840	66	1.01%
S-Oil	982	66	1.01%
	773	66	1.00%
	293	65	1.00%
LG	2,801	64	0.98%
	5,312	64	0.98%
SJM	11,948	64	0.98%
	4,000	64	0.98%
( )	43,530	64	0.97%
	4,900	62	0.95%
	1,440	62	0.95%
S&T	3,150	61	0.94%
	500	60	0.92%
	1,000	59	0.90%
GS	505	58	0.88%
	1,235	56	0.86%
	5,580	56	0.86%
	13,600	56	0.85%
LG	466	55	0.84%
	1,404	53	0.80%
	1,926	52	0.79%
	4,642	51	0.78%
	164	51	0.78%
	7,726	50	0.77%
	1,071	48	0.74%
SK	367	47	0.72%
	2,877	47	0.72%
	720	47	0.72%
	9,921	47	0.72%
	1,547	46	0.71%
	11,676	46	0.70%
LG	840	45	0.68%
	1,549	44	0.67%
	196	43	0.66%
	496	42	0.64%
	6,110	41	0.62%
	1,200	41	0.62%
	2,000	41	0.62%
	4,000	40	0.61%
	694	39	0.60%
	3,872	39	0.60%
	924	39	0.59%
	1,200	38	0.58%
	850	37	0.57%
	163	36	0.55%
KCC	81	35	0.54%
	3,620	35	0.53%
	8,932	35	0.53%

	444	31	0.47%
가	533	30	0.45%
	3,120	30	0.45%
	10,010	28	0.42%
	3,354	26	0.40%
	9,870	26	0.40%
I&C	8,324	18	0.28%
SK	406	16	0.25%
	607	15	0.22%
	149	11	0.16%
2 B	620	5	0.08%
( )	389	5	0.07%
	299,698	6,130	93.68%

( : , %)

( : , %)

( : , )

( : , )

( ) ( : )

- / ( : , %)

( : , %)

( : , %)

( : , %)

	( )	( )		( )	
	2008-06-30	320	5.08%	2008-07-01	4.89%
		73	4.50%		1.11%
		393			6.00%

( : )

--	--	--	--	--	--	--	--



0.00	0.00	16.12	4.64	0.00	0.00	0.00	0.00
------	------	-------	------	------	------	------	------

가 ( : )

**3.** ( : , , % )

137,874	2,544	66,026	793	14.44%	

) 가

) 가 100 , 100 가 .

100% ( 1 ) ,

**4.**

( : , % )

	-107	0	0	0	0	0	0	0	0	4	0	-103
	-271	0	0	0	0	0	0	0	0	4	0	-268

( : , % )

		(%)		(%)	
	0.00	0.00%	0.00	0.00%	
	0.00	0.00%	0.00	0.00%	
	0.00	0.00%	0.00	0.00%	
	0.00	0.00%	0.00	0.00%	

\*

( : % )

	0.31%	0.24%
	0.31%	0.24%

**5.** ( : , )

--	--	--	--	--

	46		9	14,295	(7 4 ) (11 11 )	99010120004
	33		27	8,206	KB (5 9 ) (2 2 )	6010120030

)

**6.**

( : , % )

	04 (08.04.01 - 08.04.30)			05 (08.05.01 - 08.05.31)			06 (08.06.01 - 08.06.30)		
	( )	( )		( )	( )		( )	( )	
CJ				3	0	0.10	34	0	0.10
				(0%)	(0%)		(2%)	(2%)	
	32	0	0.10				52	0	0.10
	(2%)	(2%)					(4%)	(4%)	
(LG )	27	0	0.10						
	(2%)	(2%)							
				22	0	0.10	87	0	0.10
				(3%)	(3%)		(6%)	(6%)	
	11	0	0.10						
	(1%)	(1%)							
	56	0	0.10				18	0	0.10
	(4%)	(4%)					(1%)	(1%)	
	969	1	0.10	299	0	0.10	521	1	0.10
	(74%)	(74%)		(48%)	(48%)		(37%)	(36%)	
				33	0	0.10			
				(5%)	(5%)				
	55	0	0.10	8	0	0.10	4	0	0.10
	(4%)	(4%)		(1%)	(1%)		(0%)	(0%)	
							3	0	0.10
							(0%)	(0%)	
				8	0	0.10			
				(1%)	(1%)				
NH				3	0	0.10			
				(0%)	(0%)				
							124	0	0.10
							(9%)	(9%)	
RB				75	0	0.10			
				(12%)	(12%)				
				36	0	0.10			
				(6%)	(6%)				
	70	0	0.10				27	0	0.10
	(5%)	(5%)					(2%)	(2%)	

				30	0	0.10	21	0	0.10
				(5%)	(5%)		(2%)	(1%)	
	30	0	0.10				56	0	0.10
	(2%)	(2%)					(4%)	(4%)	
				104	0	0.10	170	0	0.11
				(17%)	(17%)		(12%)	(14%)	
	11	0	0.10				98	0	0.10
	(1%)	(1%)					(7%)	(7%)	
	36	0	0.10	6	0	0.10	20	0	0.10
	(3%)	(3%)		(1%)	(1%)		(1%)	(1%)	
	11	0	0.10						
	(1%)	(1%)							
							59	0	0.10
							(4%)	(4%)	
SK	3	0	0.10				99	0	0.10
	(0%)	(0%)					(7%)	(7%)	
							7	0	0.25
							(0%)	(1%)	

\*

( : , % )

( : , % )

7.

8.

9.

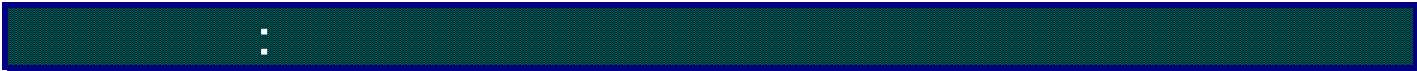
	( )	( )	가	
2007.01.03	6	175	1,031.84	1,000.00
2008.01.03	1,023	1,828	1,559.90	1,000.00

10.

[ ] 가 ( )]  
[ ]

(www.amak.or.kr)

: 34-12 (6,7 ) ( )  
: 02-2004-9500  
: www.syfund.co.kr



	가 가 . ,
( )	( ) 60%
가 ( )	가 가 .
( )	(Class) Class 가 , Class 가
	가 가 가 ( )
	가 . , , ,
	가 가 , 가 가 가 가
	가 . ,
	가 .
	가 . , , 가 .
	가 .