

가

()

[]

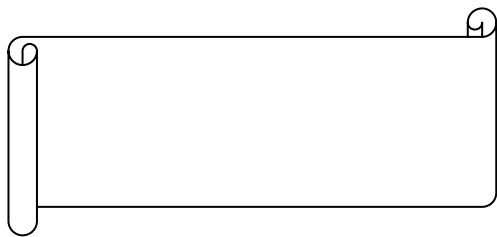
[]

(: 2008 10 03 -2009 01 02)

○ [가 [가 가] , .]

○ 가 가 (3) 가 ,
.

34-12 (6,7) ()
(:02-2004-9500 , www.syfund.co.kr)



I.

- 1.
- 2.
- 3.

II.

- 1.
- 2.
- 3.
- 4.
- 5.
- 6.
- 7.
- 8.
- 9.
- 10.

< - >

I.

1.

가 ()
 : 53638
 :
 : [](), 가 , ,

[] (: , %)

(A)	15,620,664,031	17,093,180,717	9.43%
(B)	34,568,907	36,135,340	4.53%
(C=A-B)	15,586,095,124	17,057,045,377	9.44%
(D)	16,590,886,887	18,430,721,987	11.09%
가 (E=C/D X 1000)	939.44	925.47	-1.49%

) 가 가 (), () (가)
 가 가

2.

[] (: %)

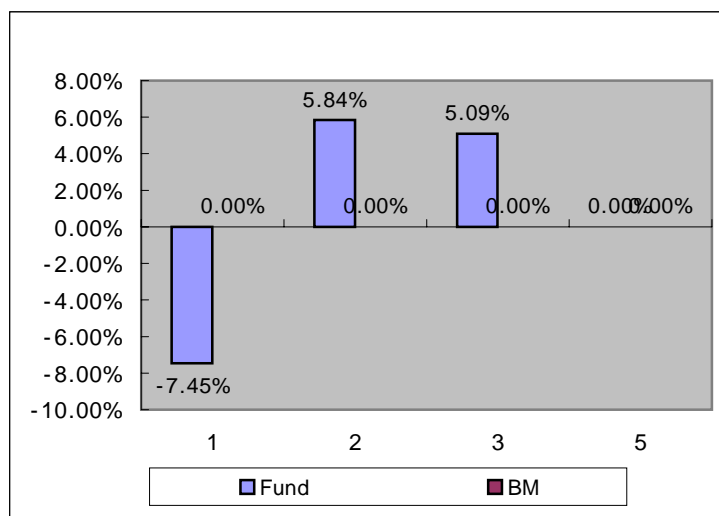
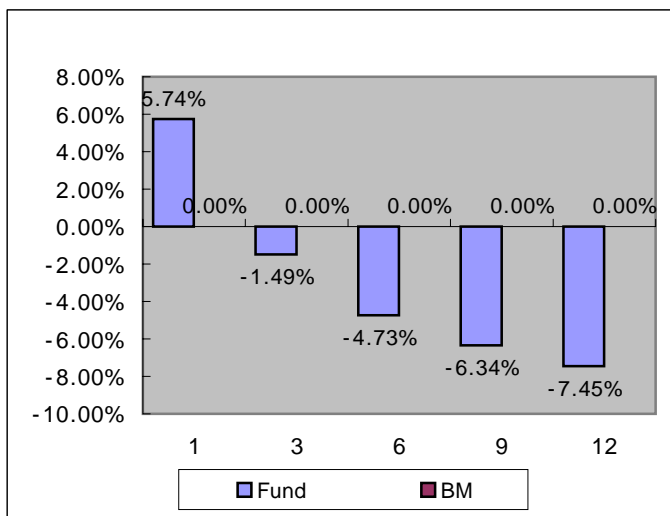
	1	3	6	9	1
가 ()	5.74%	-1.49%	-4.73%	-6.34%	-7.45%
	0.00%	0.00%	0.00%	0.00%	0.00%

:

[] (: %)

	1	2	3	5
가 ()	-7.45%	5.84%	5.09%	0.00%
	0.00%	0.00%	0.00%	0.00%

:



II.

1.

: 53638
 : 2006/01/03
 :
 :
 :
 :
 :

NH

가	가	가
---	---	---

2.

(: , %)

(: , %)

(: , %)

(: ,)

(: ,)

() (:)

- / (: , %)

(: , %)

(: , %)

				가	
	가 ()		7,221	4,914	28.75%
	()		10,038	10,915	63.86%
			17,259	15,829	92.60%

(: , %)

	()	2009/01/02	1,200	3.08%	2009/01/05	7.02%
			62	2.53%		0.36%
			1,262			7.39%

(:)

0.00	0.00	1.68	0.00	0.00	0.00	0.00	0.00
------	------	------	------	------	------	------	------

가

(:)

3. ,

(: , , %)

4.

(: , %)

	0	0	0	0	0	0	0	-142	0	12	-32	-162
	0	0	0	0	0	0	0	-488	0	14	-30	-504

(: , %)

		(%)		(%)	
	8.71	0.23%	9.00	0.23%	
	20.25	0.53%	20.93	0.53%	
	0.76	0.02%	0.78	0.02%	
	0.57	0.01%	0.59	0.01%	
	30.29	0.80%	31.30	0.80%	

*

(: %)

		0.80%	0.84%
		0.00%	0.00%

5.

(: ,)

	47	6	13,912	(7 4) (12 6)	99010120004
	34	21	8,555	現) KB (5 9) (2 9)	6010120030

)

6. ,

(: , %)

(: , %)

(: , %)

7.

8.

9.

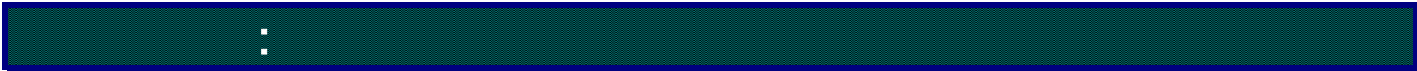
	()	()	가		
2007.01.03	14	392	1,036.10	1,000.00	
2008.01.03	1,272	6,045	1,210.47	1,000.00	
2009.01.05	0	18,431	925.47	925.47	

10.

[()] [가 ()]
 [] () []

(www.amak.or.kr)

: 34-12 (6,7) ()
 : 02-2004-9500
 : www.syfund.co.kr



	가 가 . ,
()	() 60%
가 ()	가 가 .
()	(Class) Class 가 , Class 가
	가 가 가 ()
	가 가 , , , ,
	가 가 , 가 , 가 가 가 가
	가 가 , ,
	가
	가 가 , ,
	가 가

가

()

[]

[]

(: 2008 10 03 -2009 01 02)

○ [가 [가 가] , .]

○ 가 가 (3) 가 ,
.



I.

- 1.
- 2.
- 3.

II.

- 1.
- 2.
3. ,
- 4.
- 5.
6. ,
- 7.
- 8.
- 9.
- 10.

< - >

I.

1.

: 가 ()
 : 53636
 :
 : [] (), 가 , ,

[] (: , %)

(A)	6,724,789,020	6,736,146,260	0.17%
(B)	27,306,504	32,149,222	17.73%
(C=A-B)	6,697,482,516	6,703,997,038	0.10%
(D)	8,603,807,233	9,852,025,960	14.51%
가 (E=C/D X 1000)	778.43	680.47	-12.58%

) 가 가 (), () (가)
 가 가

2.

[] (: %)

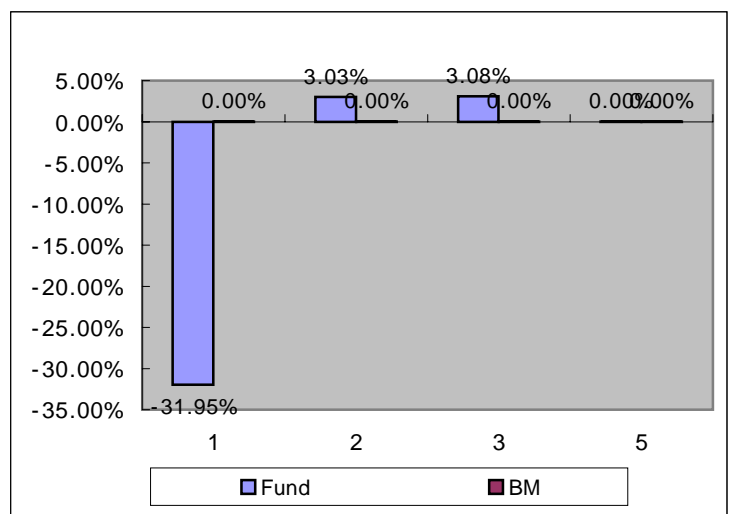
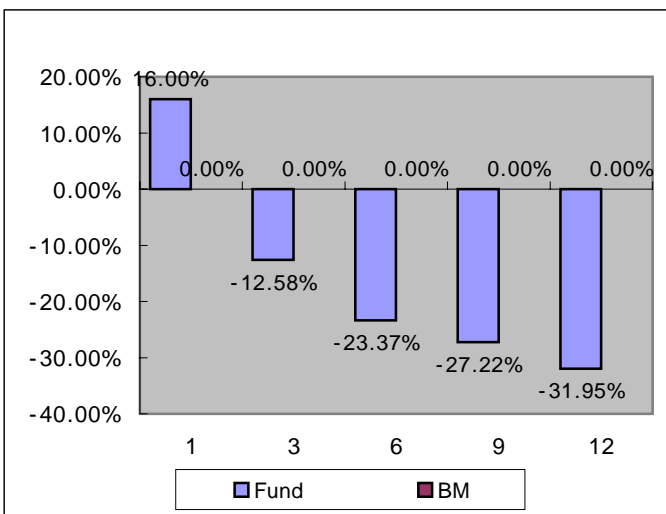
	1	3	6	9	1
가 ()	16.00%	-12.58%	-23.37%	-27.22%	-31.95%
	0.00%	0.00%	0.00%	0.00%	0.00%

:

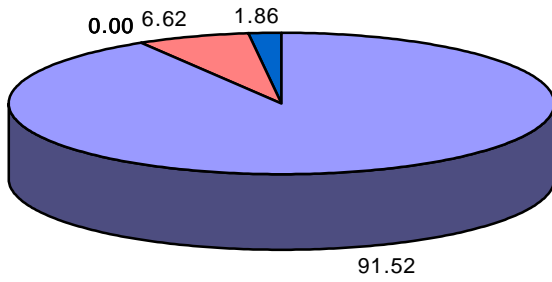
[] (: %)

	1	2	3	5
가 ()	-31.95%	3.03%	3.08%	0.00%
	0.00%	0.00%	0.00%	0.00%

:



3.



(: , %)

KRW	6,165	0	0	0	0	0	0	0	0	446	125	6,736
	(91.52)	(0.00)	(0.00)	(0.00)	(0.00)	(0.00)	(0.00)	(0.00)	(0.00)	(6.62)	(1.86)	(100.00)
	6,165	0	0	0	0	0	0	0	0	446	125	6,736
	(91.52)	(0.00)	(0.00)	(0.00)	(0.00)	(0.00)	(0.00)	(0.00)	(0.00)	(6.62)	(1.86)	(100.00)

) ()

10

		6.75%
		4.62%
	POSCO	4.03%
	KT	2.61%
		2.35%

	LG	2.07%
	LG	1.74%
		1.71%
		1.57%
	SK	1.53%

II.

1.

: 53636
 : 2006/01/03
 :
 :
 :
 :
 :

2.

(: , %)

		가	
	968	455	6.75%
	10,322	311	4.62%
POSCO	690	271	4.03%
KT	4,451	176	2.61%
	5,357	158	2.35%
LG	4,268	140	2.07%
LG	3,981	117	1.74%
	1,563	115	1.71%
	450	106	1.57%
SK	1,010	103	1.53%
	2,959	98	1.45%
	1,704	95	1.42%
GS	3,290	92	1.37%
	6,614	90	1.34%
E1	1,243	88	1.31%
	1,381	87	1.30%
	6,603	87	1.29%
KCC	285	86	1.27%
	3,944	85	1.26%
	427	85	1.26%
	1,067	82	1.22%
	4,244	81	1.20%
	2,059	81	1.20%
	363	75	1.11%
	504	73	1.08%
	1,740	73	1.08%
	338	72	1.07%
	4,962	72	1.07%
LS	1,520	71	1.06%
	3,429	71	1.05%
CJ	1,451	69	1.02%

	10,000	68	1.01%
KCC	2,988	66	0.97%
LG	4,091	65	0.96%
KC	9,270	64	0.95%
	4,000	64	0.95%
LG	3,250	64	0.95%
I&C	1,763	63	0.94%
LG	3,843	63	0.94%
LG	798	62	0.92%
	7,878	61	0.91%
	1,162	60	0.89%
KSS	14,530	60	0.89%
	22,000	60	0.89%
	45	58	0.87%
	12,951	58	0.87%
	23,730	58	0.86%
	933	56	0.83%
	13,921	54	0.80%
	1,855	54	0.79%
S-Oil	852	53	0.79%
가	1,033	52	0.78%
	16,862	51	0.76%
SK	242	51	0.75%
SJM	15,665	50	0.75%
	500	50	0.74%
	1,166	49	0.72%
	457	48	0.71%
	1,793	47	0.69%
	5,580	47	0.69%
	51	46	0.68%
	23,915	45	0.67%
	7,516	44	0.66%
() ()	21,219	44	0.65%
	14,659	43	0.64%
	13,494	43	0.64%
	710	42	0.62%
	23,000	40	0.60%
	1,136	38	0.57%
	13,416	37	0.55%
	17,250	35	0.51%
	236	34	0.51%
	211	34	0.51%
	3,297	33	0.50%
	6,000	32	0.47%
GS	453	28	0.42%
	1,071	27	0.39%
I&C	24,620	25	0.38%
	5,080	24	0.36%
S&T	4,150	23	0.35%

	1,200	23	0.34%
	3,620	22	0.33%
	1,113	22	0.32%
2 B	3,370	19	0.29%
()	7,073	15	0.22%
KISCO	326	12	0.18%
	2,131	11	0.16%
()	25	3	0.04%
	466,687	6,165	91.52%

(: , %)

(: , %)

(: ,)

(: ,)

() (:)

- / (: , %)

(: , %)

(: , %)

(: , %)

	()	()	()		()	
()	2009/01/02	300	3.08%	2009/01/05	4.45%	
		146	2.53%		2.17%	
		446			6.62%	

(:)

0.00	0.00	0.00	125.32	0.00	0.00	0.00	0.00
------	------	------	--------	------	------	------	------

가 (:)

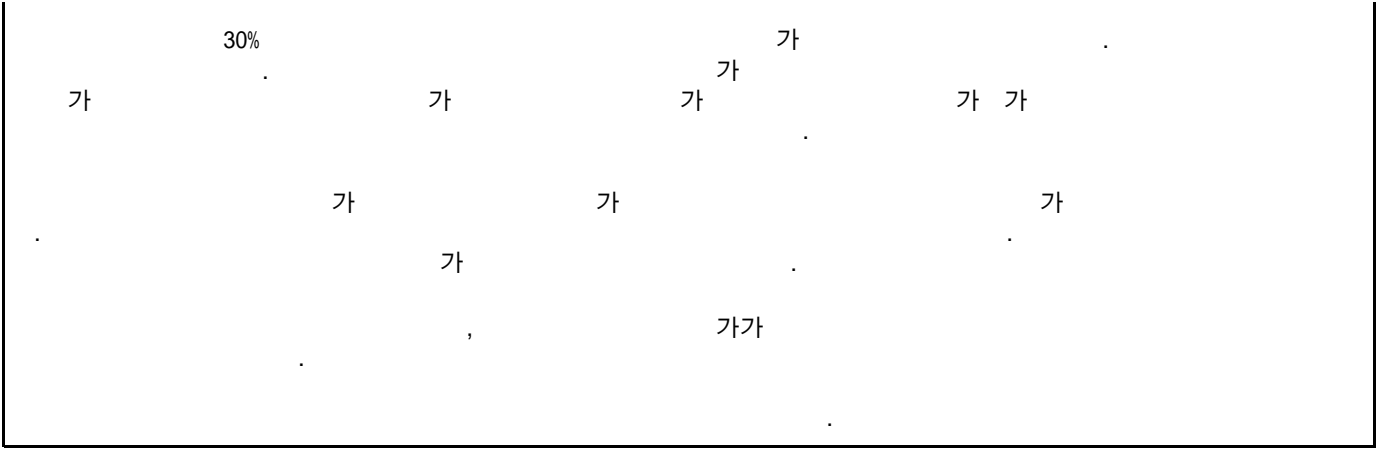
3. (: , , %)

121,360	1,576	24,000	654	12.20%

) 가
) 가 100 , 100 가 .
 100% (1) , 가 .

4.

3 IMF 10 가 가
 가 가
 가 가
 KOSPI 900 KOSPI 1200p 가 900p
 가 가
 가 10 가 가
 가 가 가
 가 가 가 가
 가 가 가 가
 3 KOSPI 16% 가 12.6% 가 가
 가 가 가 가
 가 가
 PBR 0.5 가 가 가 가
 가 가 가 가



(: , %)

										5	0	-761
	-766	0	0	0	0	0	0	0	0	5	0	-761
	-877	0	0	0	0	0	0	0	0	7	0	-870

(: , %)

		(%)		(%)	
	0.00	0.00%	0.00	0.00%	
	0.00	0.00%	0.00	0.00%	
	0.00	0.00%	0.00	0.00%	
	0.00	0.00%	0.00	0.00%	

*

(: %)

		0.26%	0.13%
		0.24%	0.16%

5. (: ,)

	47					
			6	13,912		
					(7 4) (12 6) 現)	99010120004
	34		21	8,555	KB (5 9) (2 9)	6010120030

)

6.

(: , %)

	10 (08.10.03 - 08.11.02)			11 (08.11.03 - 08.12.02)			12 (08.12.03 - 09.01.02)		
	()	()		()	()		()	()	
	25	0	0.10						
	(2%)	(2%)							
IBK	31	0	0.10						
	(3%)	(3%)							
KTB	23	0	0.10						
	(2%)	(2%)							
							14	0	0.10
							(2%)	(2%)	
LIG							8	0	0.10
							(1%)	(1%)	
	5	0	0.10	7	0	0.10	18	0	0.10
	(0%)	(0%)		(1%)	(1%)		(3%)	(3%)	
	51	0	0.10	22	0	0.10	19	0	0.10
	(5%)	(5%)		(4%)	(4%)		(3%)	(3%)	
(LG)	21	0	0.10	6	0	0.10	23	0	0.10
	(2%)	(2%)		(1%)	(1%)		(4%)	(4%)	
	70	0	0.10	9	0	0.10			
	(6%)	(6%)		(2%)	(2%)				
	9	0	0.10						
	(1%)	(1%)							
							21	0	0.10
							(3%)	(3%)	
	468	0	0.10	282	0	0.10	383	0	0.10
	(42%)	(42%)		(53%)	(52%)		(65%)	(63%)	
	26	0	0.10						
	(2%)	(2%)							
	34	0	0.10				9	0	0.10
	(3%)	(3%)					(1%)	(1%)	
	12	0	0.10						
	(1%)	(1%)							
				3	0	0.10			
				(1%)	(1%)				
NH							2	0	0.10
							(0%)	(0%)	
	6	0	0.10	11	0	0.10	4	0	0.10
	(1%)	(1%)		(2%)	(2%)		(1%)	(1%)	
(KG	63	0	0.10						
	(6%)	(6%)							
	25	0	0.10						
	(2%)	(2%)							
RB				26	0	0.10			
				(5%)	(5%)				
				17	0	0.10			

				(3%)	(3%)				
	26	0	0.10	17	0	0.10	7	0	0.10
	(2%)	(2%)		(3%)	(3%)		(1%)	(1%)	
	51	0	0.10	18	0	0.10	18	0	0.10
	(5%)	(5%)		(3%)	(3%)		(3%)	(3%)	
	44	0	0.10	26	0	0.10	11	0	0.10
	(4%)	(4%)		(5%)	(5%)		(2%)	(2%)	
							3	0	0.10
							(1%)	(1%)	
				4	0	0.25	13	0	0.25
				(1%)	(2%)		(2%)	(5%)	
	15	0	0.10	14	0	0.10			
	(1%)	(1%)		(3%)	(3%)				
	40	0	0.10	13	0	0.10	8	0	0.10
	(4%)	(4%)		(2%)	(2%)		(1%)	(1%)	
	48	0	0.10	12	0	0.10	26	0	0.10
	(4%)	(4%)		(2%)	(2%)		(4%)	(4%)	
	15	0	0.10				2	0	0.10
	(1%)	(1%)					(0%)	(0%)	
SK				43	0	0.10			
				(8%)	(8%)				
				5	0	0.10			
				(1%)	(1%)				

*

(: , %)

(: , %)

7.

8.

9.

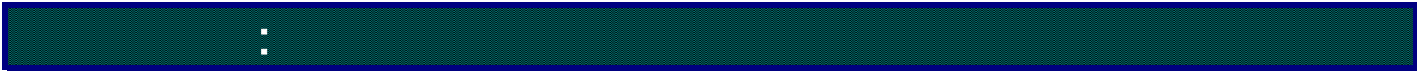
	()	()	가	
2007.01.03	6	175	1,031.84	1,000.00
2008.01.03	1,023	1,828	1,559.90	1,000.00
2009.01.05	0	9,852	680.47	680.47

10.

[] 가 [] ()

(www.amak.or.kr)

: 34-12 (6,7) ()
: 02-2004-9500
: www.syfund.co.kr



	가 가 . ,
()	() 60%
가 ()	가 가 .
()	(Class) Class 가 , Class 가
	가 가 가 ()
	가 . , , ,
	가 가 , 가 가 가 , 가
	가 . ,
	가 .
	, , 가 . ,
	가 .

()
[]

[]

(: 2008 10 03 -2009 01 02)

○ [가 [가 가] , .]
○ 가 가 (3) 가 ,
.



I.

- 1.
- 2.
- 3.

II.

- 1.
- 2.
3. ,
- 4.
- 5.
6. ,
- 7.
- 8.
- 9.
- 10.

< - >

I.

1.

: ()
 : 53637
 :
 : [() , 가 , ,

[] (: , %)

(A)	21,000,844,564	23,526,431,677	12.03%
(B)	14,109,908	1,363,027	-90.34%
(C=A-B)	20,986,734,656	23,525,068,650	12.09%
(D)	20,083,833,063	21,633,908,108	7.72%
가 (E=C/D X 1000)	1,044.96	1,087.42	4.06%

) 가 가 (), () (가)
 가 가

2.

[] (: %)

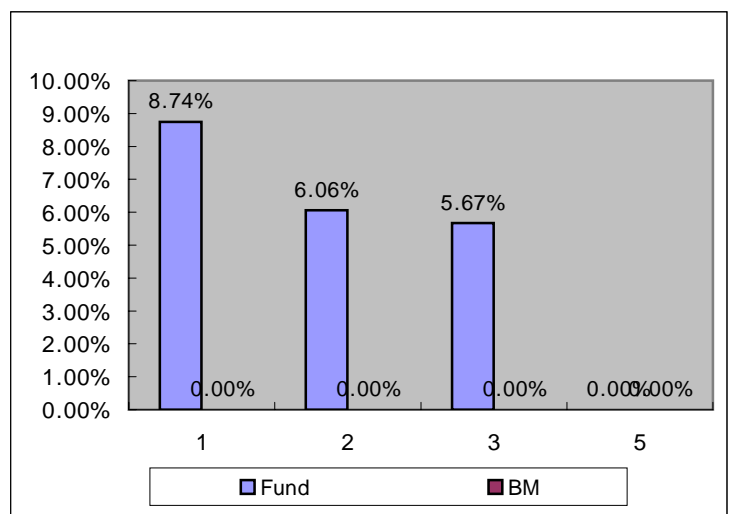
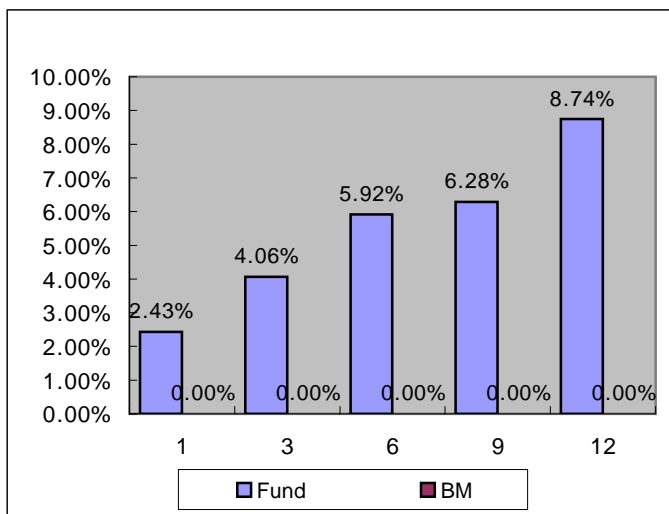
	1	3	6	9	1
()	2.43%	4.06%	5.92%	6.28%	8.74%
	0.00%	0.00%	0.00%	0.00%	0.00%

:

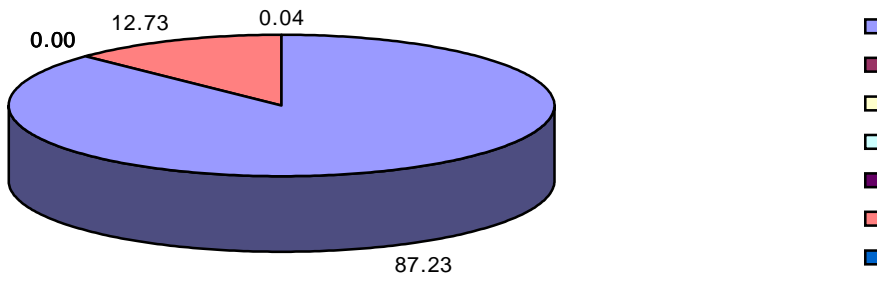
[] (: %)

	1	2	3	5
()	8.74%	6.06%	5.67%	0.00%
	0.00%	0.00%	0.00%	0.00%

:



3.



(: , %)

KRW	0	20,523	0	0	0	0	0	0	0	2,995	9	23,526
	(0.00)	(87.23)	(0.00)	(0.00)	(0.00)	(0.00)	(0.00)	(0.00)	(0.00)	(12.73)	(0.04)	(100.00)
	0	20,523	0	0	0	0	0	0	0	2,995	9	23,526
	(0.00)	(87.23)	(0.00)	(0.00)	(0.00)	(0.00)	(0.00)	(0.00)	(0.00)	(12.73)	(0.04)	(100.00)

) ()

10

	1 06-10	41.88%
	43-713-2-11	8.65%
	43-745-2-31	5.68%
	43-705-2-14	4.72%
	()	4.29%

	43-707-2-28	3.43%
	44-2-546-28	3.33%
	()0703	2.99%
	()	2.27%
	0550-1106(08-3	2.23%

II.

1.

: 53637
 : 2006/01/03
 :
 :
 :
 :
 :

2.

(: , %)

(: , %)

	가	가					
1 06-10	9,600	9,852	2006/10/31	2011/10/31		RF	41.88%
43-713-2-11	2,000	2,035	2007/04/11	2009/04/11		RF	8.65%
43-745-2-31	1,300	1,337	2007/10/31	2009/10/31		RF	5.68%
43-705-2-14	1,100	1,110	2007/02/14	2009/02/14		RF	4.72%
43-707-2-28	800	807	2007/02/28	2009/02/28		RF	3.43%
44-2-546-28	800	784	2008/02/28	2009/08/27		RF	3.33%
()0703	700	704	2007/03/28	2009/03/28		AAA	2.99%
0550-1106(08-3	500	525	2008/06/10	2011/06/10		RF	2.23%
2801	500	515	2008/01/15	2010/01/15		AAA	2.19%
44-707-2-12	500	514	2008/02/12	2010/02/12		RF	2.19%
1 08-03	500	480	2008/03/31	2013/03/31		RF	2.04%
1 05-02	340	378	2005/02/28	2010/02/28		RF	1.61%
1 07-03	250	251	2007/03/31	2012/03/31		RF	1.07%
1 07-02	240	242	2007/02/28	2012/02/29		RF	1.03%
1 04-08	200	227	2004/08/31	2009/08/31		RF	0.96%
1 06-06	200	209	2006/06/30	2011/06/30		RF	0.89%
1 04-06	125	143	2004/06/30	2009/06/30		RF	0.61%
1 06-12	110	112	2006/12/31	2011/12/31		RF	0.48%
1 07-04	110	110	2007/04/30	2012/04/30		RF	0.47%
1 05-11	100	108	2005/11/30	2010/11/30		RF	0.46%
1 04-07	70	80	2004/07/31	2009/07/31		RF	0.34%
	20,045	20,523					87.23%

(: , %)

(: ,)

(: ,)

()

(:)

- /

(: , %)

(: , %)

(: , %)

(: , %)

		()	()		()	
		2008/01/03	535	7.00%	2009/01/05	2.27%
		2008/01/11	246	7.10%	2009/01/12	1.05%
		2008/11/18	1,009	6.90%	2009/05/18	4.29%
	()	2009/01/02	1,100	3.08%	2009/01/05	4.68%
			105	2.53%		0.45%
			2,995			12.73%

(:)

0.00	0.00	0.00	0.00	9.01	0.00	0.00	0.00

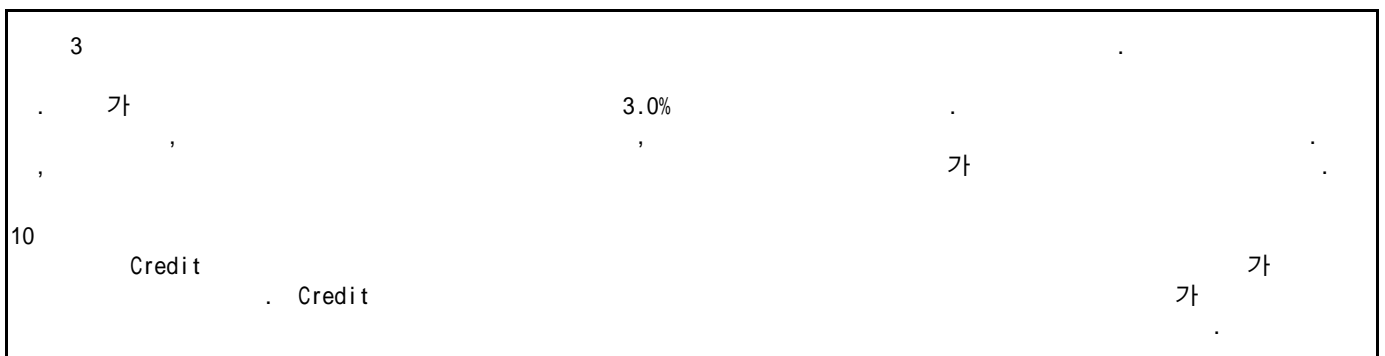
가

(:)

3. ,

(: , , %)

4.



11 가 5% 가 ,
 .12 가 가
 가 가
 가 , 2009 가 가
 가 가

(: , %)

	0	902	0	-52	0	0	0	0	0	37	1	887
	0	295	0	-4	0	0	0	0	0	57	-1	348

(: , %)

		(%)		(%)	
	0.00	0.00%	0.00	0.00%	
	0.00	0.00%	0.00	0.00%	
	0.00	0.00%	0.00	0.00%	
	0.00	0.00%	0.00	0.00%	

*

(: %)

	0.02%	0.02%
	0.00%	0.00%

5. (: ,)

	38		13	125	LG (6) (9 5)	10120013

)

6. ,

(: , %)

(: , %)

	10 (08.10.03 - 08.11.02)			11 (08.11.03 - 08.12.02)			12 (08.12.03 - 09.01.02)		
	()	()		()	()		()	()	
				9,648		0.00	21,779	0	0.00
				(8%)			(100%)	(0%)	
(LG)				20,206		0.00			
				(17%)					
	4,000	0	0.00						
	(16%)	(0%)							
				22,923		0.00			
				(19%)					
				9,653		0.00			
				(8%)					
HMC () IB				9,254		0.00			
				(8%)					
				9,502		0.00			
				(8%)					
				9,660		0.00			
				(8%)					
				10,438		0.00			
				(9%)					
	21,386	0	0.00	17,005		0.00			
	(84%)	(0%)		(14%)					

*

(: , %)

	10 (08.10.03 - 08.11.02)			11 (08.11.03 - 08.12.02)			12 (08.12.03 - 09.01.02)		
	()	()		()	()		()	()	
				4,310	0	0.00	24,209	1	0.00
				(72%)	(78%)		(100%)	(100%)	
	13,345	0	0.00	1,637	0	0.00			
	(100%)	(100%)		(28%)	(22%)				

*

7.

8.

9.

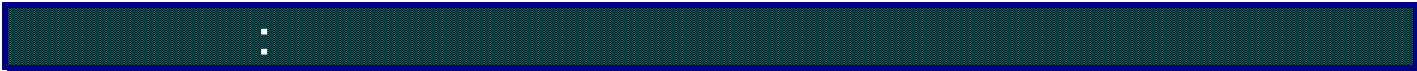
	()	()	가		
2007.01.03	22	453	1,049.08	1,000.00	
2008.01.03	273	7,929	1,034.40	1,000.00	
2009.01.05	1,891	21,634	1,087.42	1,000.00	

10.

[] [()]

(www.amak.or.kr)

: 34-12 (6,7) ()
: 02-2004-9500
: www.syfund.co.kr



	가 가 . ,
()	() 60%
가 ()	가 가 .
()	(Class) Class 가 , Class 가
	가 가 가 ()
	가 가 , , , ,
	가 가 , 가 , 가 가 가 가
	가 가 , ,
	가
	가 , , 가 .
	가