



( : 2008 10 24 -2009 01 23 )

○ [ 가 [ 가 가 ] , .]  
○ 가 가 (3 ) 가 ,



I.

- 1.
- 2.
- 3.

II.

- 1.
- 2.
- 3.
- 4.
- 5.
- 6.
- 7.
- 8.
- 9.
- 10.

< - >

# I.

## 1.

: ( )  
 : 54209  
 :  
 : [ ( ) , 가 , ,

[ ] ( : , %)

(A)	15,257,599,450	17,450,238,252	14.37%
(B)	50,270,735	31,988,621	-36.37%
(C=A-B)	15,207,328,715	17,418,249,631	14.54%
(D)	16,610,738,343	18,235,298,294	9.78%
가 (E=C/D X 1000)	915.51	955.19	4.33%

) 가 가 ( ), ( ) ( 가 )  
 가 가

## 2.

[ ] ( : %)

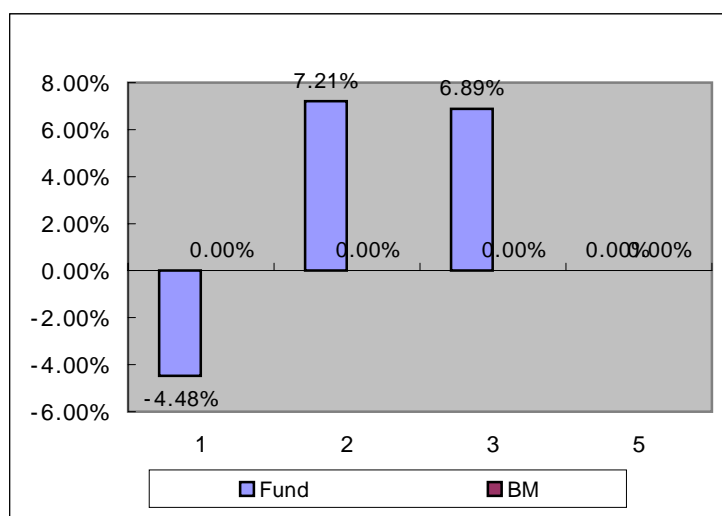
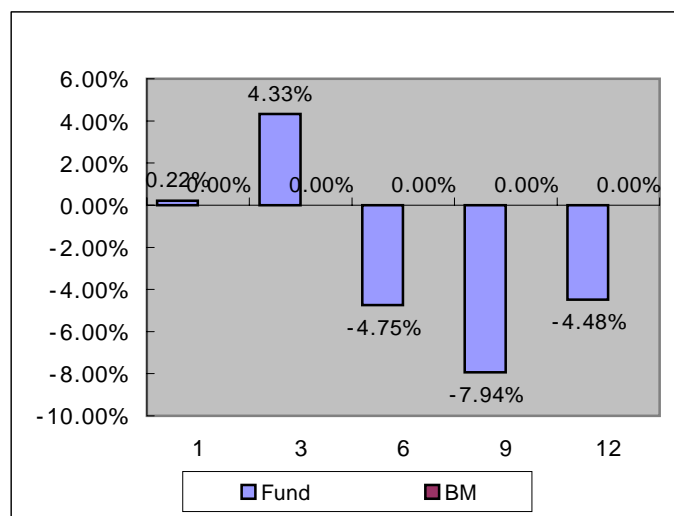
	1	3	6	9	1
( )	0.22%	4.33%	-4.75%	-7.94%	-4.48%
	0.00%	0.00%	0.00%	0.00%	0.00%

:

[ ] ( : %)

	1	2	3	5
( )	-4.48%	7.21%	6.89%	0.00%
	0.00%	0.00%	0.00%	0.00%

:







( : , % )

		( )	( )		( )	
	NH	2009/01/23	1,456	2.58%	2009/01/28	8.34%
			0	2.07%		0.00%
			1,456			8.35%

( : )

가

( : )

3. ,

( : , , % )

4.

( : , % )

	0	0	0	0	0	0	0	683	0	13	-34	662
	0	0	0	0	0	0	0	-1,422	0	18	-31	-1,435

( : , % )

		(%)		(%)	
	9.01	0.23%	9.35	0.23%	
	20.95	0.53%	21.74	0.53%	
	0.78	0.02%	0.81	0.02%	
	0.59	0.01%	0.61	0.01%	
	31.33	0.80%	32.51	0.80%	

\*

( : % )

	0.80%	0.84%
	0.00%	0.00%

5.

( : , )

	47		6	13,979	(7 4 ) (12 6 )
	39		17	3,072	(5 ) (4 7 )

)

6. ,

( : , % )

( : , % )

( : , % )

7.

8.

9.

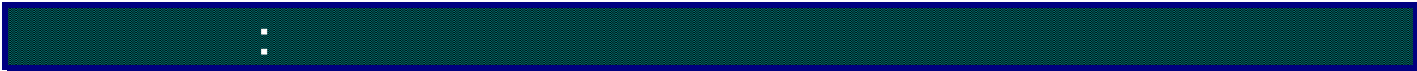
	( )	( )	가		
2007.01.24	20	315	1,062.42	1,000.00	
2008.01.24	1,218	5,990	1,203.38	1,000.00	
2009.01.28	0	18,235	955.19	955.19	

10.

[ ] ( ) [ ] ( ) [ ] ( )

(www.amak.or.kr)

: 34-12 (6,7 ) ( )  
 : 02-2004-9500  
 : www.syfund.co.kr



	가 가 . ,
( )	( ) 60%
가 ( )	가 가 .
( )	(Class) Class 가 , Class 가
	가 가 가 ( )
	가 가 , , , ,
	가 가 , 가 가 가 , 가
	가 가 , ,
	가
	가 가 , ,
	가 .
	가



( )  
[ ]

[ ]

( : 2008 10 24 -2009 01 23 )

○ [ 가 [ 가 가 ] , .]  
○ 가 가 (3 ) 가 ,  
.



I.

- 1.
- 2.
- 3.

II.

- 1.
- 2.
3. ,
- 4.
- 5.
6. ,
- 7.
- 8.
- 9.
- 10.

< - >

# I.

## 1.

: ( )  
 : 53637  
 :  
 : [ ( ), 가 , ,

[ ] ( : , %)

(A)	21,326,464,119	22,384,014,221	4.96%
(B)	9,214,452	881,959	-90.43%
(C=A-B)	21,317,249,667	22,383,132,262	5.00%
(D)	20,202,096,753	22,188,485,719	9.83%
가 (E=C/D X 1000)	1,055.20	1,008.77	-4.40%

) 가 가 ( ), ( ) ( 가 )  
 가 가

## 2.

[ ] ( : %)

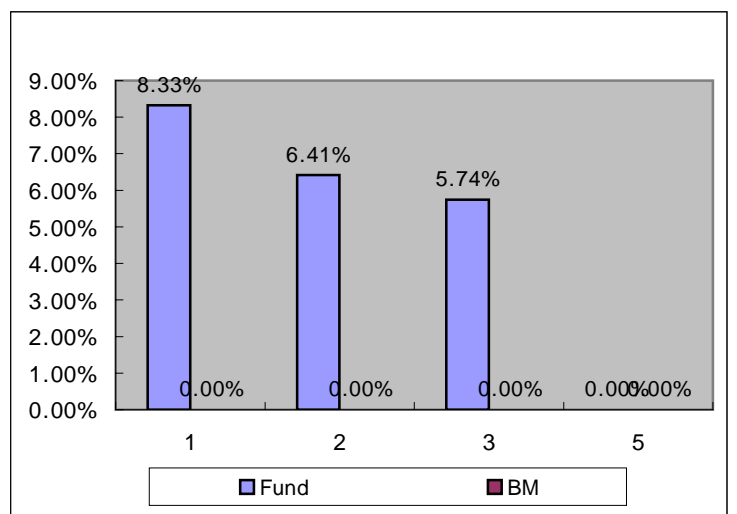
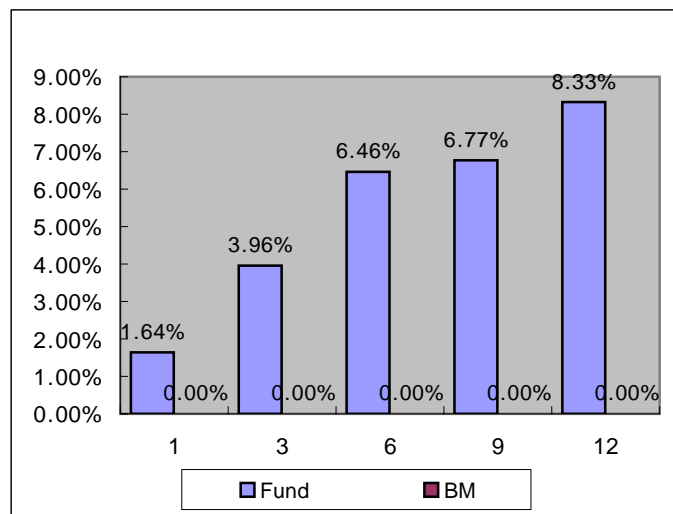
	1	3	6	9	1
( )	1.64%	3.96%	6.46%	6.77%	8.33%
	0.00%	0.00%	0.00%	0.00%	0.00%

:

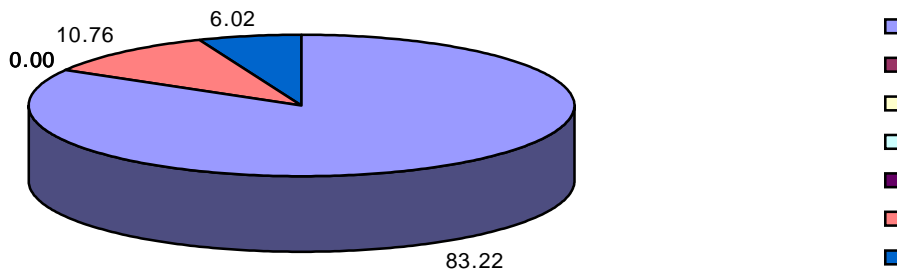
[ ] ( : %)

	1	2	3	5
( )	8.33%	6.41%	5.74%	0.00%
	0.00%	0.00%	0.00%	0.00%

:



3.



( : , % )

KRW	0	18,628	0	0	0	0	0	0	0	2,408	1,348	22,384
	(0.00)	(83.22)	(0.00)	(0.00)	(0.00)	(0.00)	(0.00)	(0.00)	(0.00)	(10.76)	(6.02)	(100.00)
	0	18,628	0	0	0	0	0	0	0	2,408	1,348	22,384
	(0.00)	(83.22)	(0.00)	(0.00)	(0.00)	(0.00)	(0.00)	(0.00)	(0.00)	(10.76)	(6.02)	(100.00)

) ( )

10

	1 06-10	44.58%
	43-713-2-11	9.01%
	45-701-2-13	4.50%
	( )	4.03%
	44-2-546-28	3.53%

	( )0703	3.15%
	0550-1106(08-3	2.36%
	44-707-2-12	2.31%
	2801	2.30%
	( )	2.24%

# II.

## 1.

: 53637  
 : 2006/01/03  
 :  
 :  
 :  
 :  
 :

## 2.

( : , %)

( : , %)

	가	가					
1 06-10	9,600	9,979	2006/10/31	2011/10/31		RF	44.58%
43-713-2-11	2,000	2,016	2007/04/11	2009/04/11		RF	9.01%
45-701-2-13	1,000	1,006	2009/01/13	2011/01/13		RF	4.50%
44-2-546-28	800	789	2008/02/28	2009/08/27		RF	3.53%
( )0703	700	706	2007/03/28	2009/03/28		AAA	3.15%
0550-1106(08-3	500	528	2008/06/10	2011/06/10		RF	2.36%
44-707-2-12	500	518	2008/02/12	2010/02/12		RF	2.31%
2801	500	515	2008/01/15	2010/01/15		AAA	2.30%
1 08-03	500	486	2008/03/31	2013/03/31		RF	2.17%
1 05-02	340	382	2005/02/28	2010/02/28		RF	1.71%
1 07-03	250	255	2007/03/31	2012/03/31		RF	1.14%
1 07-02	240	245	2007/02/28	2012/02/29		RF	1.10%
1 04-08	200	229	2004/08/31	2009/08/31		RF	1.02%
1 06-06	200	212	2006/06/30	2011/06/30		RF	0.95%
1 04-06	125	144	2004/06/30	2009/06/30		RF	0.64%
1 06-12	110	113	2006/12/31	2011/12/31		RF	0.51%
1 07-04	110	112	2007/04/30	2012/04/30		RF	0.50%
1 05-11	100	109	2005/11/30	2010/11/30		RF	0.49%
43-751-2	100	104	2007/12/12	2009/12/12		RF	0.46%
43-705-2-14	100	101	2007/02/14	2009/02/14		RF	0.45%
1 04-07	70	80	2004/07/31	2009/07/31		RF	0.36%
	18,045	18,628					83.22%

( : , %)

( : , )

( : , )

( )

( : )

- /

( : , %)

( : , %)

( : , %)

( : , %)

		( )	( )		( )	
		2008/11/18	901	6.90%	2009/05/18	4.03%
		2009/01/05	501	5.70%	2010/01/05	2.24%
	NH	2009/01/23	1,004	2.58%	2009/01/28	4.49%
			1	2.07%		0.00%
			2,408			10.76%

( : )

0.00	0.00	1,346.87	0.00	1.23	0.00	0.00	0.00
------	------	----------	------	------	------	------	------

가

( : )

3. ,

( : , , % )

4.

3	가	2.5%	가
11	가	가 5%	가
12	가	가	

2009 1

가 50

가 가

가

가  
가

2009

가

가

가

( : , % )

	0	-522	-1	34	0	0	0	0	0	-149	1	-638
	0	693	1	-34	0	0	0	0	0	139	-2	797

( : , % )

		(%)		(%)	
	0.00	0.00%	0.00	0.00%	
	0.00	0.00%	0.00	0.00%	
	0.00	0.00%	0.00	0.00%	
	0.00	0.00%	0.00	0.00%	

\*

( : % )

	0.02%	0.01%
	0.00%	0.00%

5.

( : , )

	38		13	127	LG	(6 ) (9 5 )
						10120013

)

**6.**

( : , % )

( : , % )

	10 (08.10.24 - 08.11.23)			11 (08.11.24 - 08.12.23)			12 (08.12.24 - 09.01.23)		
	( )	( )		( )	( )		( )	( )	
	9,648	0	0.00	21,259		0.00	2,675	0	0.00
	(10%)	(0%)		(53%)			(16%)	(0%)	
(LG )	20,006	0	0.00	200		0.00	1,011	0	0.00
	(20%)	(0%)		(1%)			(6%)	(0%)	
	13,672	0	0.00	9,251		0.00	1,000	0	0.00
	(14%)	(0%)		(23%)			(6%)	(0%)	
	9,653	0	0.00						
	(10%)	(0%)							
HMC ( ) IB				9,254		0.00	5,255	0	0.00
				(23%)			(31%)	(0%)	
	9,502	0	0.00						
	(10%)	(0%)							
							5,255	0	0.00
							(31%)	(0%)	
	9,660	0	0.00						
	(10%)	(0%)							
							999	0	0.00
							(6%)	(0%)	
(CD/CP)							1,000	0	0.00
							(6%)	(0%)	
	10,438	0	0.00						
	(10%)	(0%)							
	17,005	0	0.00						
	(17%)	(0%)							

\*

( : , % )

	10 (08.10.24 - 08.11.23)			11 (08.11.24 - 08.12.23)			12 (08.12.24 - 09.01.23)		
	( )	( )		( )	( )		( )	( )	
				28,519	1	0.00	0	0	
				(100%)	(100%)		(0%)	(0%)	
	3,260	0	0.00						
	(100%)	(100%)							

\*

**7.**



8.

9.

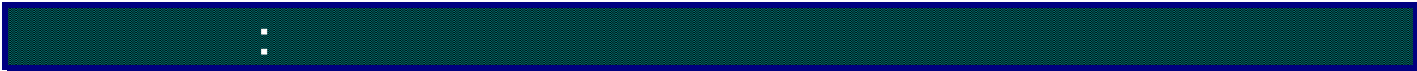
	( )	( )	가		
2007.01.03	22	453	1,049.08	1,000.00	
2008.01.03	273	7,929	1,034.40	1,000.00	
2009.01.05	1,891	21,634	1,087.42	1,000.00	

10.

[ ] [ ( ) ]

(www.amak.or.kr)

: 34-12 (6,7 ) ( )  
: 02-2004-9500  
: www.syfund.co.kr

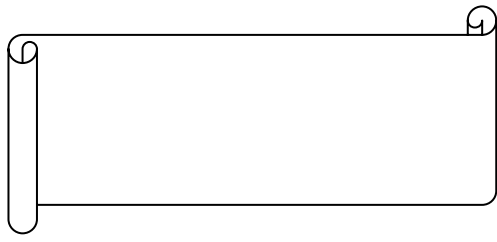


	가 가 . ,
( )	( ) 60%
가 ( )	가 가 .
( )	(Class) Class 가 , Class 가
	가 가 가 ( )
	가 . , , ,
	가 가 , 가 가 가 , 가
	가 . ,
	가 .
	가 . , ,
	가 .
	가



( : 2008 10 24 -2009 01 23 )

○ [ 가 [ 가 가 ] , .]  
○ 가 가 (3 ) 가 ,



I.

- 1.
- 2.
- 3.

II.

- 1.
- 2.
3. ,
- 4.
- 5.
6. ,
- 7.
- 8.
- 9.
- 10.

< - >

# I.

## 1.

: ( )  
 : 54007  
 :  
 : [ ( ) , 가 , ,

[ ] ( : , %)

(A)	4,261,902,255	7,169,659,207	68.23%
(B)	7,785,917	947,785,024	12073.07%
(C=A-B)	4,254,116,338	6,221,874,183	46.26%
(D)	6,542,295,503	8,867,156,376	35.54%
가 (E=C/D X 1000)	650.25	701.68	7.91%

) 가 가 ( ) , ( ) ( 가 )

## 2.

[ ] ( : %)

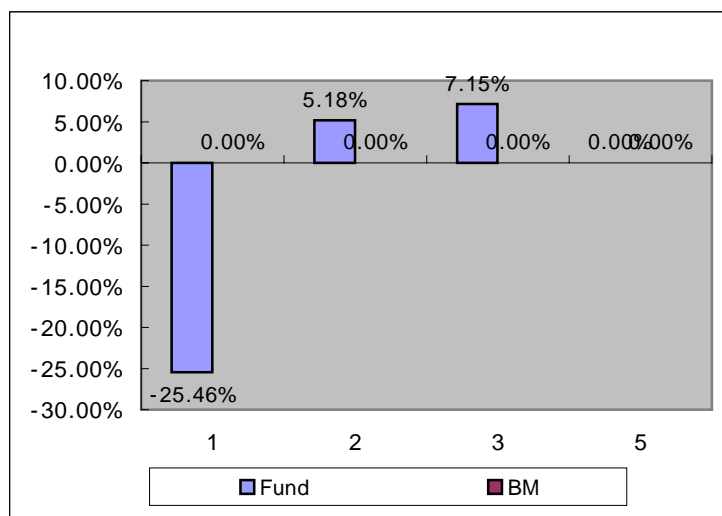
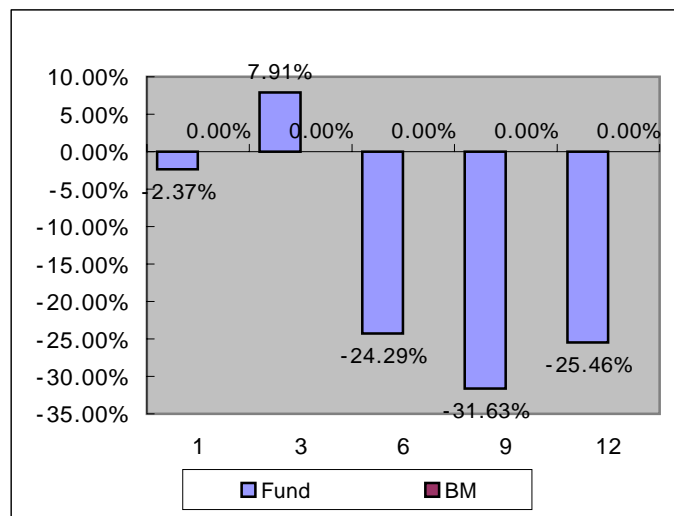
	1	3	6	9	1
( )	-2.37%	7.91%	-24.29%	-31.63%	-25.46%
	0.00%	0.00%	0.00%	0.00%	0.00%

:

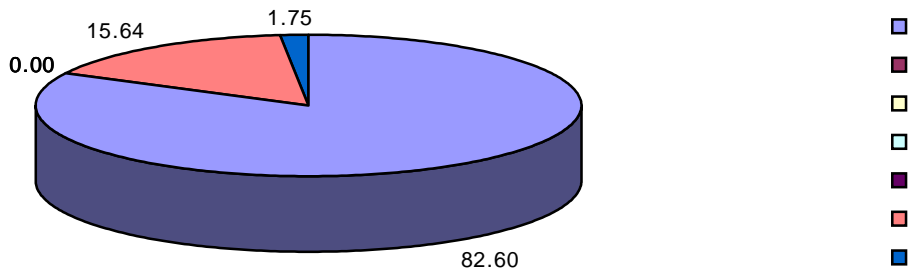
[ ] ( : %)

	1	2	3	5
( )	-25.46%	5.18%	7.15%	0.00%
	0.00%	0.00%	0.00%	0.00%

:



3.



( : , % )

KRW	5,922	0	0	0	0	0	0	0	0	1,122	126	7,170
	(82.60)	(0.00)	(0.00)	(0.00)	(0.00)	(0.00)	(0.00)	(0.00)	(0.00)	(15.64)	(1.75)	(100.00)
	5,922	0	0	0	0	0	0	0	0	1,122	126	7,170
	(82.60)	(0.00)	(0.00)	(0.00)	(0.00)	(0.00)	(0.00)	(0.00)	(0.00)	(15.64)	(1.75)	(100.00)

) ( )

10

		4.40%
		3.73%
	POSCO	3.63%
	SK	3.29%
		3.23%

	KT	3.23%
	가	2.88%
	LG	2.39%
	2 B	2.12%
	LG	1.94%

# II.

## 1.

: 54007  
 : 2006/01/16  
 :  
 :  
 :  
 :  
 :

## 2.

( : , %)

		가	
	714	316	4.40%
	9,701	267	3.73%
POSCO	765	260	3.63%
SK	1,123	236	3.29%
	47,843	232	3.23%
KT	5,649	232	3.23%
가	4,215	207	2.88%
LG	6,020	172	2.39%
2 B	10,720	152	2.12%
LG	4,758	139	1.94%
	654	118	1.65%
	443	116	1.62%
	3,001	113	1.58%
	1,522	103	1.44%
S-Oil	1,533	90	1.26%
CJ	2,001	90	1.25%
	2,690	88	1.22%
	485	87	1.22%
	6,953	86	1.19%
KB	2,510	80	1.12%
LG	4,308	79	1.10%
	3,867	77	1.08%
LS	1,066	77	1.07%
	901	73	1.02%
E1	1,065	71	0.99%
	2,560	65	0.91%
	9,513	63	0.88%
KT&G	734	62	0.87%
	10,090	60	0.84%
	1,198	60	0.84%
	2,430	60	0.83%

	7,450	60	0.83%
GS	2,390	59	0.82%
SDI	937	59	0.82%
	990	59	0.82%
	4,780	58	0.81%
	2,860	56	0.78%
SK	543	53	0.74%
	10,350	48	0.68%
	1,680	47	0.66%
	7,170	46	0.65%
	2,500	46	0.64%
LG	2,590	46	0.64%
LG	1,180	45	0.62%
	3,530	42	0.59%
	1,130	42	0.58%
	2,090	42	0.58%
	15,061	41	0.58%
SK가	870	41	0.57%
	1,590	40	0.56%
가	1,790	39	0.55%
	13,954	39	0.55%
-	10,394	38	0.53%
	1,347	38	0.52%
	9,870	37	0.52%
SBS	1,170	37	0.51%
	3,480	37	0.51%
G R	3,690	36	0.51%
	11,400	36	0.50%
	2,550	36	0.50%
	20,468	36	0.50%
WISCOM	10,590	36	0.50%
가	2,080	35	0.49%
	14,126	34	0.47%
CJ	840	33	0.47%
	23,160	33	0.46%
	222	33	0.46%
CJ	2,252	33	0.45%
	175	32	0.45%
	14,902	32	0.45%
	7,160	30	0.42%
	537	30	0.41%
	2,480	29	0.40%
	5,159	29	0.40%
	9,508	29	0.40%
	3,780	29	0.40%
	970	28	0.40%
LG	1,699	24	0.33%
	1,680	22	0.31%
	1,840	22	0.30%



	632	18	0.25%
	198	17	0.23%
	7,460	16	0.23%
	1,060	11	0.15%
	5,104	10	0.14%
( )	162	5	0.07%
( )	803	4	0.05%
	419,415	5,922	82.60%

( : , %)

( : , %)

( : , )

( : , )

( )

( : )

- /

( : , %)

( : , %)

( : , %)

( : , %)

	( )	( )	( )	( )
NH	2009/01/23	1,121	2.58%	2009/01/28
		1	2.07%	
		1,122		

( : )

0.00	0.00	0.00	125.53	0.00	0.00	0.00	0.00
------	------	------	--------	------	------	------	------

가

( : )

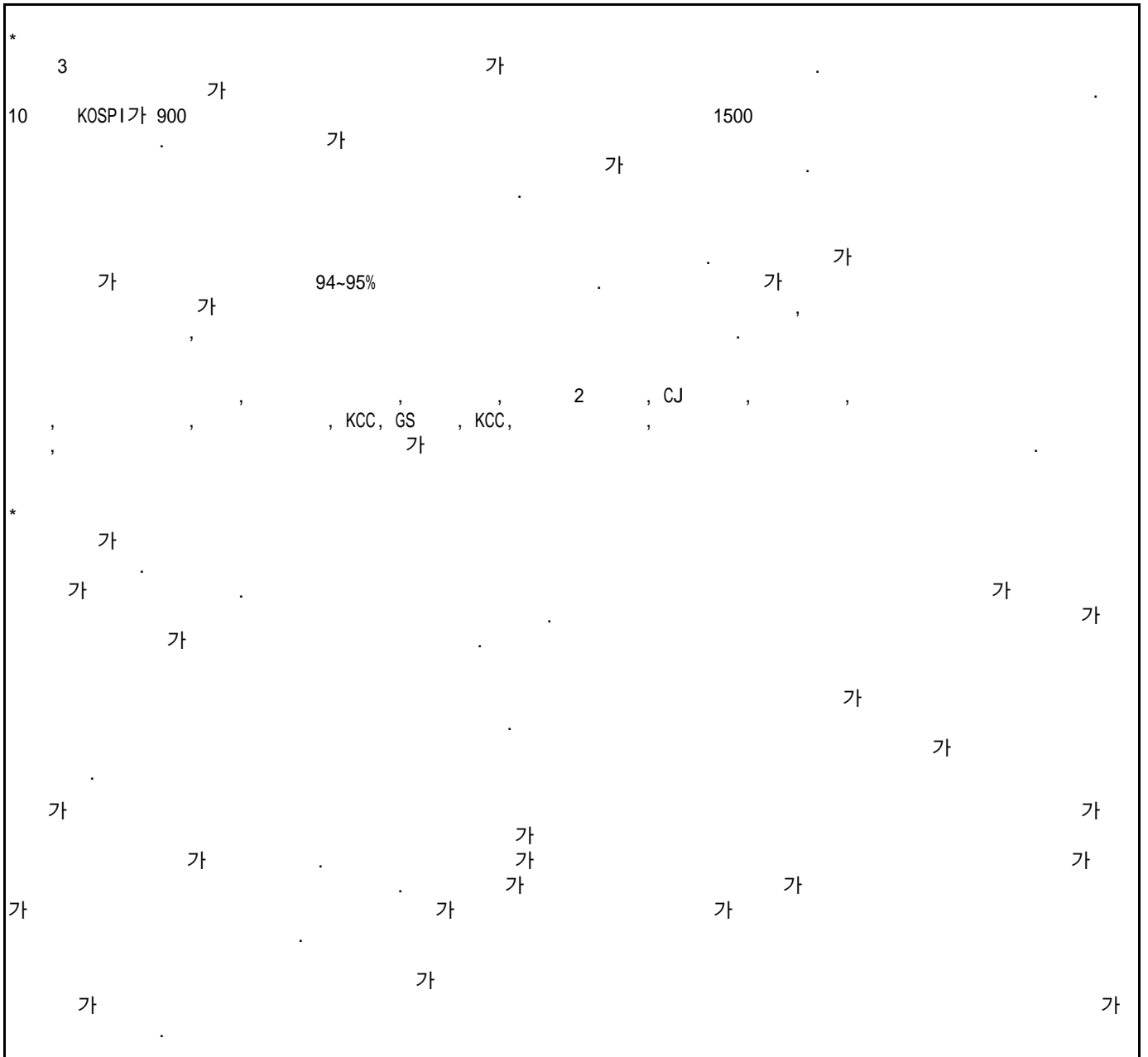
**3.** ( : , , % )

183,709	2,529	53,020	818	18.35%

) 가

) 가 100 , 100 가 .  
100% ( 1 ) ,

**4.**



( : , % )

	2,149	0	0	0	0	0	0	0	0	-11	0	2,139
	-2,347	0	0	0	0	0	0	0	0	10	0	-2,337

( : , % )

				(%)			(%)					
				0.00	0.00%		0.00	0.00%				
				0.00	0.00%		0.00	0.00%				
				0.00	0.00%		0.00	0.00%				
				0.00	0.00%		0.00	0.00%				

\*

( : % )

		0.40%	0.19%
		0.39%	0.22%

5.

( : , )

	47		6	13,919	(7 4 ) (12 6 )	99010120004
	39		17	3,072	(5 ) (4 7 )	1010120017

)

6.

( : , % )

	10 (08.10.24 - 08.11.23)			11 (08.11.24 - 08.12.23)			12 (08.12.24 - 09.01.23)		
	( )	( )		( )	( )		( )	( )	
LIG				115	0	0.10			
				(14%)	(14%)				
	26	0	0.10	151	0	0.10			
	(3%)	(4%)		(18%)	(19%)				
	452	0	0.07	108	0	0.10			
	(51%)	(51%)		(13%)	(13%)				

				193	0	0.10			
				(23%)	(24%)				
				153	0	0.07			
				(18%)	(13%)				
							24	0	0.10
							(1%)	(2%)	
							6	0	0.10
							(0%)	(1%)	
							694	0	0.07
							(43%)	(41%)	
HMC	(						253	0	0.07
							(16%)	(15%)	
NH							52	0	0.10
							(3%)	(4%)	
BNG							10	0	0.10
							(1%)	(1%)	
				43	0	0.10			
				(5%)	(5%)				
RB		20	0	0.10					
		(2%)	(3%)						
				31	0	0.10			
				(4%)	(4%)				
		390	0	0.07					
		(44%)	(42%)						
							26	0	0.10
							(2%)	(2%)	
				20	0	0.10			
				(2%)	(2%)				
				38	0	0.10			
				(5%)	(5%)				
							540	0	0.07
							(34%)	(33%)	

\*

( : , % )

( : , % )

7.

8.

9.

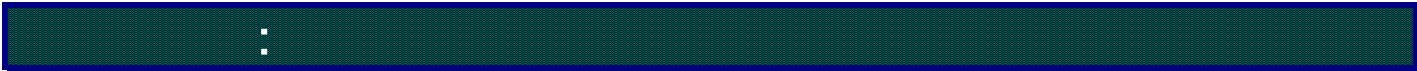
	( )	( )	가		
2007.01.16	12	89	1,135.43	1,000.00	
2008.01.16	927	1,701	1,545.25	1,000.00	
2009.01.16	0	7,371	705.99	705.99	

10.

[ ] [ ( )]

(www.amak.or.kr)

: 34-12 (6,7 ) ( )  
: 02-2004-9500  
: www.syfund.co.kr



	가 가 . ,
( )	( ) 60%
가 ( )	가 가 .
( )	(Class) Class 가 , Class 가
	가 가 가 ( )
	가 . , , ,
	가 가 , 가 가 가 , 가
	가 . ,
	가 .
	가 . , , 가 .
	가